

# ASSEMBLY INSTRUCTIONS

## TAMARACK

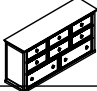


### BB044-050 DRESSER


Thank you for purchasing this quality product. Be sure to check all packing materials carefully for small parts, which may have come loose inside the carton during shipment. Identify and count all items and compare with the parts list and/or hardware list shown below.

#### IMPORTANT NOTE :

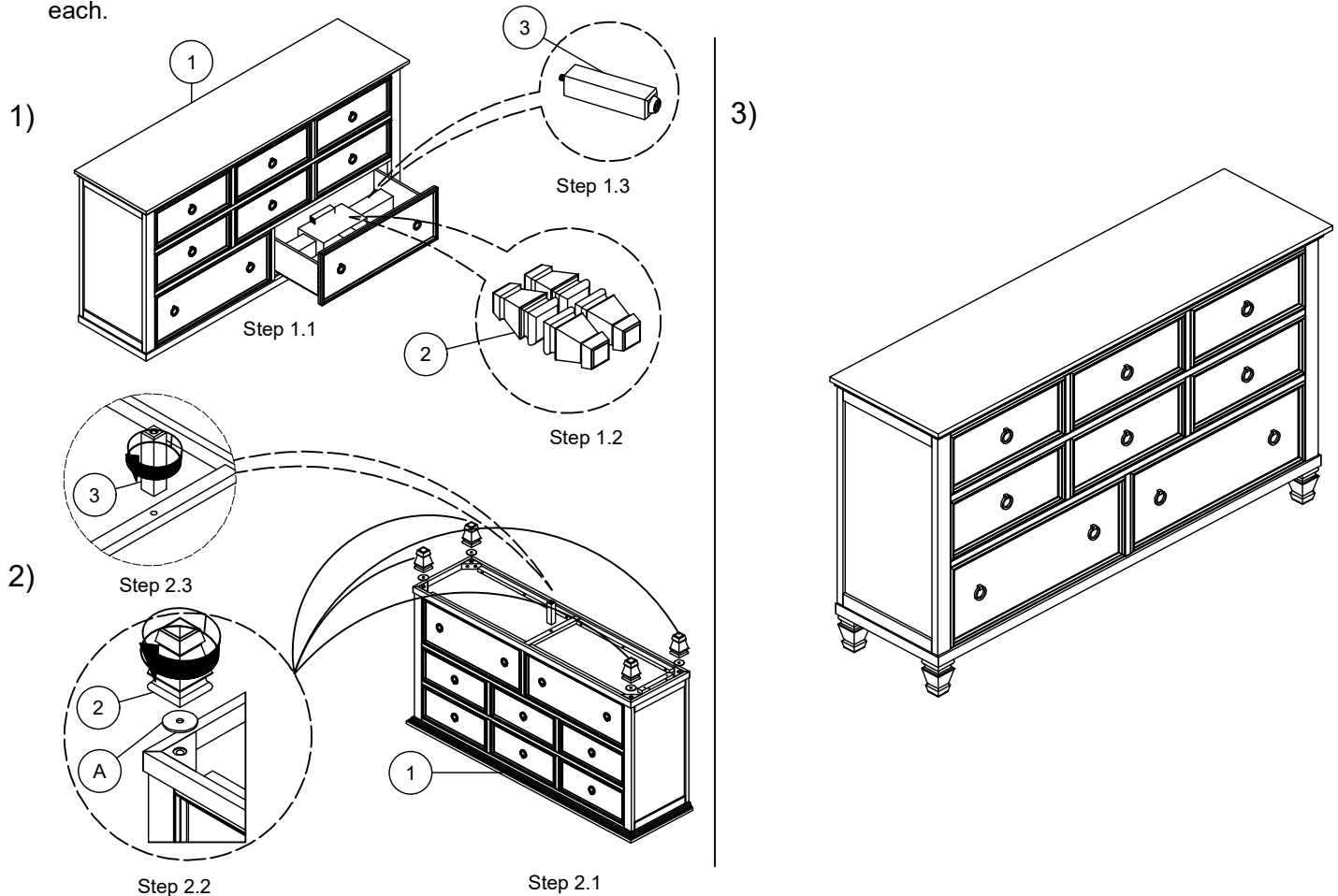
Place all wooden parts on a clean and smooth surface such as a rug or carpet to avoid the parts from being scratched. Check to be sure that you have all parts and hardware. Remove all wrapping materials, including staples & packing straps before you start to assemble. Do not tighten all screw/bolts until all completely assembled. Keep all hardware parts out of reach of children.

**DO NOT TIGHTEN BOLTS/SCREWS UNTIL ALL COMPLETELY ASSEMBLED.**

PARTS LIST			
NO.		DESCRIPTION	QTY
1		DRESSER	1 PC
2		LEG	4 PCS
3		CTR LEG	1 PC

HARDWARE LIST			
NO.		DESCRIPTION	QTY
A		PLASTIC WASHER M8 x 47 x 3mm	4 PCS

1. Gently take out KD leg and Center Leg from bottom drawer Dresser.
2. Take out KD leg from inner box and follow assemble at instruction step 2.1
3. Follow instruction 2.2 and 2.3. Then tighten KD leg and Center Leg every single each.



New Classic Home Furnishings