

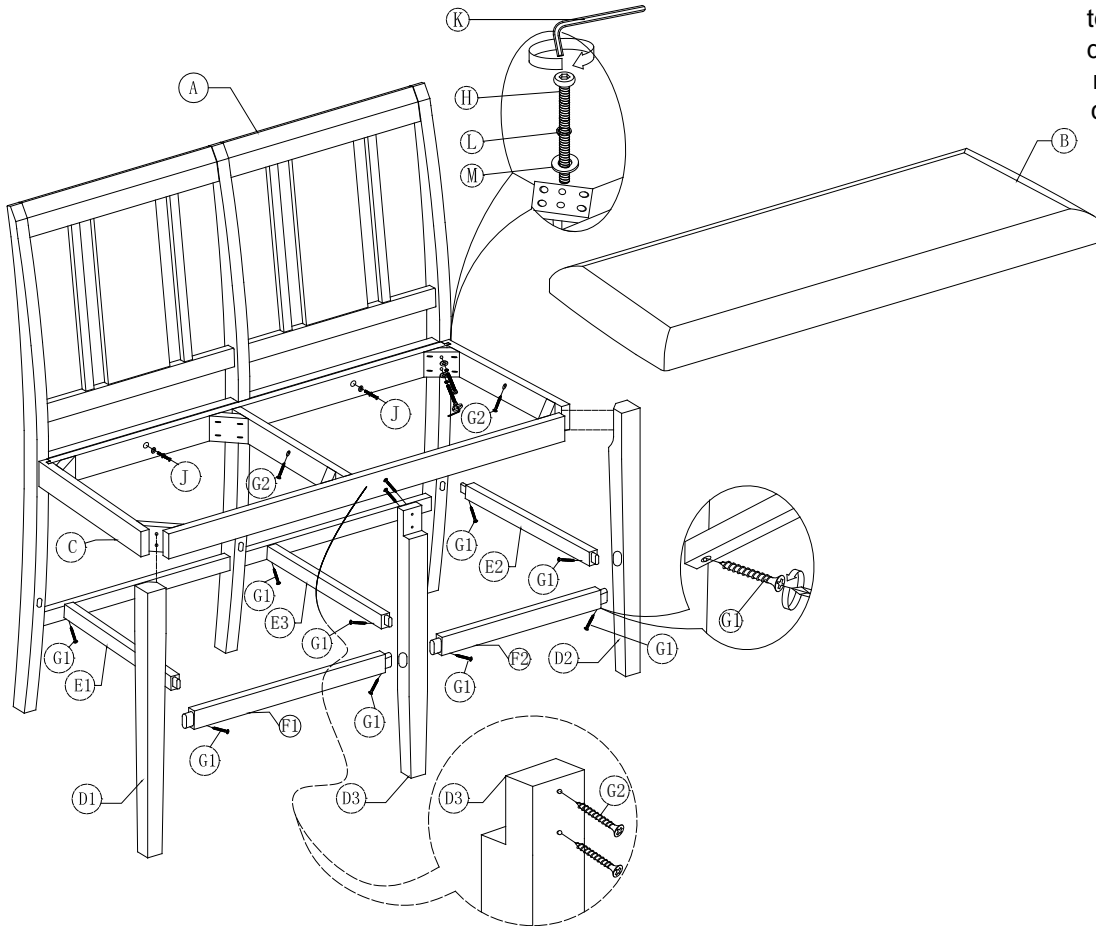
CHAIR ASSEMBLY INSTRUCTIONS

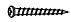
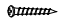

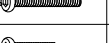

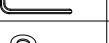


REFER TO DIAGRAM BEFORE COMPLETING EACH STEP

45-150-21BC#

PARTS AND HARDWARE LIST

Use only the screws provided to assemble chair. Using different or longer screws could result in splits or damage to the chair.



NO	DESCRIPTION	QTY
A	Back Leg Assembly	1PC
B	Wood Seat	1PC
C	Seat Frame	1PC
D1	FrontLeg(Left)	1PC
D2	FrontLeg(Right)	1PC
D3	FrontLeg(Center)	1PC
E1	Link rail (Left)	1PC
E2	Link rail (Right)	1PC
E3	Center rail	1PC
F1	Front rail (Left)	1PC
F2	Front rail (Right)	1PC
G1	Long screw 	10PCS
G2	Short screw 	7PCS
H	Long Bolt 3 inches 	4PCS
I	Medium Bolt 2 3/8 inches 	4PCS
J	Short Bolt 1 3/4 inches 	2PCS
K	Allen Wrench 	1PC
L	Flat Washer 	10PCS
M	LockWasher 	10PCS

- ASSEMBLE SEAT FRAME AND BACK:** Match up the holes on the Seat Frame (C) to the Back Leg Assembly (A).
- Thread a Flat Washer (L) onto a Long Bolt (H). Then slide a Lock Washer (M) on the same bolt and insert the bolt assembly into the predrilled corner holes of the Seat Frame and the matching holes on the Back Leg Assembly. Tighten them with the Allen Wrench (K) provided. Repeat with other back corner.
- Thread a Flat Washer (L) onto a Short Bolt (J). Then slide a Lock Washer (M) on the same bolt and insert this assembly into the predrilled holes on the back of the Seat Frame and the matching holes on the Back Leg Assembly. Tighten them with the Allen Wrench (K) provided. Repeat with remain holes on back of seat frame.
- Insert Link Bars (E1, E2) into the holes provided on the lower portion of the Back Leg Assembly (A). There is a predrilled hole on each end of the link bars. Make sure those holes are positioned facing down (Towards the floor when the chair is completely assembled)
- ASSEMBLE FRONT:** Insert the Front Stretcher (F) into the Front Legs (D1 and D2) using the holes on the lower portion of each leg. There is a predrilled hole on each end of the stretcher. Make sure the hole is facing towards the floor after the stretcher is inserted.
- CONNECT FRONT AND BACK:** Insert the Front Leg Assembly from Step 4 into the appropriate slots of the Seat Frame (C).
- Fit the Link Bars (E1, E2) from step 3 into the appropriate holes of the front legs.
- Match the holes at the top corner of each leg with the holes at the front corners of the Seat Frame. Thread a Flat Washer (L) and Lock Washer (M) onto a Medium Bolt (I). Insert this bolt assembly through the Seat Frame and into the matching holes on the Front Legs. Do not fully tighten. Repeat with the other legs, securing loosely.
- Before completely tightening Seat Frame to Legs, check to make sure the holes on the Front Stretcher and Link Bars are still facing down (Towards the Floor when the chair is completely assembled). Tighten all bolts.
- SECURE STRETCHERS and LINK BARS:** Insert a Long Screw (G) through the predrilled hole on each stretcher and link bar and tighten with a screwdriver.
- ATTACH SEAT:** Place Seat (B) on the Seat Frame and secure from underside using wood screws provided.